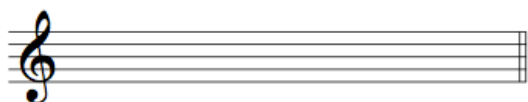


ACCESO A 3º 4º 5º 6º GP  
SEPTIEMBRE 2013

NOMBRE

1. Divide los siguientes grupos rítmicos escribiéndolos en notación tradicional:



2. Escribe el modo utilizado en cada melodía:

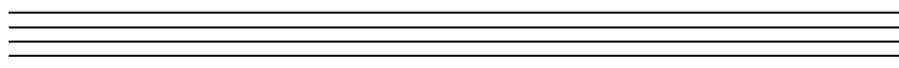
\_\_\_\_\_

\_\_\_\_\_

**Musical examples**

*Morrison's Jig – Ireland*

see appendix: 3-4; CD#1: 3; CD#2: 3, 35 \*



3. Analiza armónicamente: Coloca qué acordes utilizarías, señala las notas extrañas y nombra las cadencias.

The first staff of music is in 3/8 time and contains 8 measures. The second staff starts at measure 9 and contains 8 measures. The melody consists of eighth and sixteenth notes, with some chromaticism and a final cadence.

4. Escribe la partitura para un clarinete en Si b.

The first staff of music is in 3/4 time and contains 8 measures. The second staff starts at measure 9 and contains 8 measures. The melody is written in treble clef with a key signature of one sharp (F#) and includes various note values and rests.

Three sets of empty musical staves, each consisting of five lines, provided for the student to write the clarinet part for exercise 4.

5. Escribe la partitura para un conjunto de violín, viola, violoncello y clarinete en La.

**Violín, viola y clarinete** tocarán la **melodía** (en unísono y en la misma tesitura) y

**violonchelo** el **bajo armónico** de esa melodía, que será la fundamental del acorde.

Emplea la clave correspondiente a cada instrumento.

Violín



Viola



Clarinete en La



Violonchelo



The image shows a musical score for a quartet. The first staff is for the Violín, written in treble clef with a 6/8 time signature. It contains a melody of 12 notes: G4, A4, B4, C5, B4, A4, G4, F4, E4, D4, C4, B3. The notes are grouped into four measures. The final two notes, C4 and B3, are beamed together with a fermata underneath. Below the Violín staff are three empty staves for the Viola, Clarinete en La, and Violonchelo, each with its instrument name written above it.